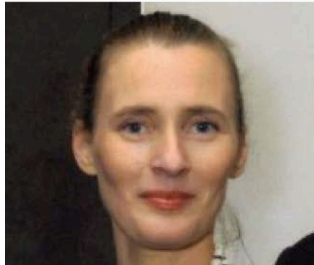


## STRATEGIC COUNCIL

*Adviser*

**ANN TAYLOR**



### Anne Taylor

Executive Director at American Club of Lisbon  
Lisbon Area, Portugal | Hospitality

Previous American Club of Lisbon, The Bettmann News Archive,  
Community Board #7, N.Y.C.

Education Sarah Lawrence College



#### Experience

##### **Executive Director**

American Club of Lisbon

October 1994 – Present (22 years 1 month) | American Club of Lisbon

##### **President**

American Club of Lisbon

October 1994 – 2014 (20 years)

I began working as assistant to President Blaine Tavares under the guidance of Ms Ellen Broom, and later became Executive Director, position which I held until last Monday January 9th, 2012 when I was elected President of the Club for a 2 year term. The American Club will endeavor to grow and give it's members a chance at listening to really interesting pro active speakers, in addition to the great networking opportunities always available at our events. In April of 2015 I handed over the position of president and resumed my position as Executive Director.

##### **researcher**

The Bettmann News Archive

October 1982 – October 1983 (1 year 1 month)

##### **sociology intern**

Community Board #7, N.Y.C.

January 1980 – April 1982 (2 years 4 months)



#### Education

##### **Sarah Lawrence College**

BA, Sociology

1982 – 1986



#### Additional Info

##### • Personal Details

Birthday September 17

Marital Status Single